

# September Holiday Program



## WELCOME BACK

Welcome back parents to our SEPTEMBER School Holiday Program. We have organized a great program that we know your children will love.

Westgate Vacation Care have really worked hard with our educators on some professional development so that we can guide, build, and develop positive relationships with each child ensuring that our flexible program can adjust to individual needs and interest of all the children in our care.

We promote and encourage children to explore, learn and have fun by providing opportunities and endless varieties in a safe and secure environment.



## REMINDERS

- ✓ Morning tea, Lunch and Afternoon tea must be packed- lunch order option available
- ✓ Payments must be paid on the first day of program
- ✓ Please pack hat, lunch box and water bottles on excursion days

## SPECIAL EVENTS

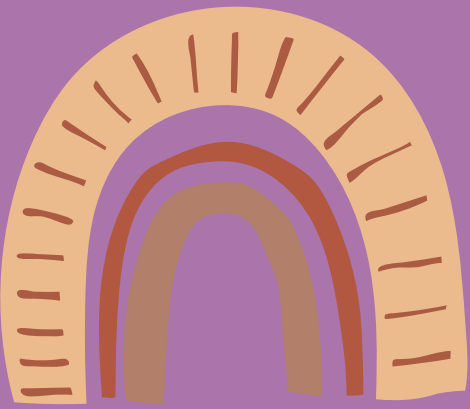
**TUES 20TH**  
WERRIBEE ZOO  
EXCURSION

**THURS 22ND**  
ROCK CLIMBING  
INCURSION

**TUES 27TH**  
NINJA COURSE  
EXCURSION

**THURS 29TH**  
HARRY POTTER SCIENCE  
INCURSION





# September Holiday Program



## OPERATING HOURS

Westgate Vacation Care operates along side Victorian school holidays except for public holidays.

This program is open September 19th – September 30th 2022 from 7:30am – 6pm. Applications will be processed between 12pm–6pm Monday to Friday.

## PRICING

	FULL DAY	HALF DAY (5HR PERIOD)
EARLY BIRD RATE (PAID BEFORE MON 13TH OF SEPTEMBER)	\$55	\$50
STANDARD RATE	\$65	\$60
ON THE DAY RATE	\$70	\$65

## **TECHNOLOGY DEVICES**

Westgate will be providing small supervised windows for children to play creative and educational games on their device. We will no longer allow internet access or any games that are rated above PG. It is to the educator's discretion to determine what is appropriate for the group. Devices are to be checked in at the front counter and collected from educators at pick up. Please note that devices are the child's responsibility however educators will guide the children to take great care while in our program.

**CHILD CARE SUBSIDY** The percentage of Child Care Subsidy a family is entitled to is based on combined annual family income and is applied on a per child basis, regardless the number of children in a family or their age. While the Child Care Subsidy does not include different rates and complex loadings to provide greater assistance to families with multiple children, it is better targeted and provides more assistance for low- and middle-income families in relation to all children. For more information visit: <https://www.education.gov.au/new-child-care-package-frequentlyasked-questions>

## **ABSENCES**

Families are entitled to 42 absence days per child, per financial year, and may be entitled to additional absence days in certain circumstances (including illness of the child, a parent or sibling). In shared care arrangements, the allocation of 42 absences per financial year relates to the child, not each individual claimant. Under the Child Care Subsidy, when a child does not attend care on a day they are scheduled to attend, providers are able to claim an absence for the child up to 42 times in a financial year, so long as on the day the absence is claimed, Child Care Subsidy would have been claimed (i.e. the child would have otherwise been in care, and the family hasn't already reached their fortnightly entitlement of subsidized hours based on their activity test result)

## **.LUNCH OPTIONS**

All children that attend Westgate Vacation Care must bring a refillable drink bottle each day as well as a healthy lunch box with multiple snacks. Our program has a range of breaks such as Morning Tea, Lunch and Afternoon Tea and encourages healthy lunch option. Our service does not have a nut policy in place however asks that parents and guardians are mindful. If we have a child who is anaphylactic attending Educators will be conducting lunch box checks to ensure safety for all.

## **SIGN IN AND OUT**

Westgate Vacation Care require families to sign their children in and out of the program each day. It is important that all information is filled in on the sign in and out forms and that accurate information is supplied. IE: Under the section "who will collect" must be a name "JANE SMITH" and not anything else "MUM". ALL PERSONS ALLOCATED TO SIGNING A CHILD OUT MUST PROVIDE PHOTO ID EACH TIME AND BE 18 YEARS OR OLDER.

**COVID SAFE** Westgate Vacation Care are not taking any chances when it comes to the safety and welfare of the children and families in our care which is why we will be implementing a number of procedures throughout the centre. We ask that during drop off and pick up times we respect social distancing guidelines and follow DHHS directives at all times. Westgate will keep families informed through emails and signage. Due to the Victorian guidelines ALL parents of child(ren) attending Westgate Vacation Care must be double vaccinated. Proof of vaccination / exemption must be shown on arrival.

## **BEHAVIOUR**

At Westgate Vacation Care our number one priority is well-being of our children. It's our educators job to uphold a high standard of respect to one another in order for the children to learn our expectations. We will be introducing a warning method for the children if their behaviour doesn't meet our expectations. 1st warning (verbal warning) This will be verbal to let the children know that their actions have been wrong and solutions will be discussed so they know the more appropriate method for future 2nd warning (verbal/written) When the child has reached their second warning they will be taken out of activities and a written warning will be taken. Parents also notified VIA email/phone call 3rd FINAL warning When the child has reached their final warning a written email will be sent to parents explaining events that happened. 3rd and final warnings will result in a 1 day suspension or possible expulsion from program depending on the events taken part.